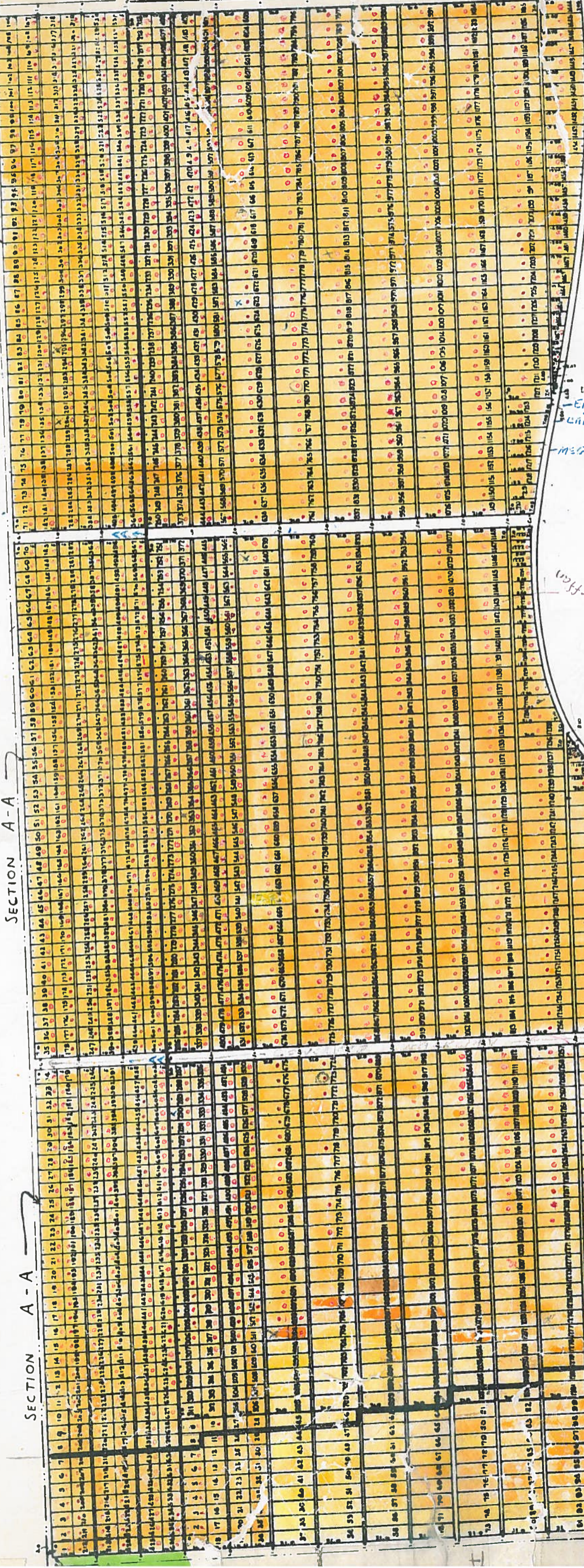


SECTION A-A



SECTION A

LOTS SOUTH OF THIS LINE TAKEN BY NEW YORK STATE FOR KENSINGTON EXPRESSWAY 1963 AND REMAINS TRANSFERRED TO SECTION "U2"

MAINTENANCE GARAGE CASE OF BLDG LINES UP W/ PATH