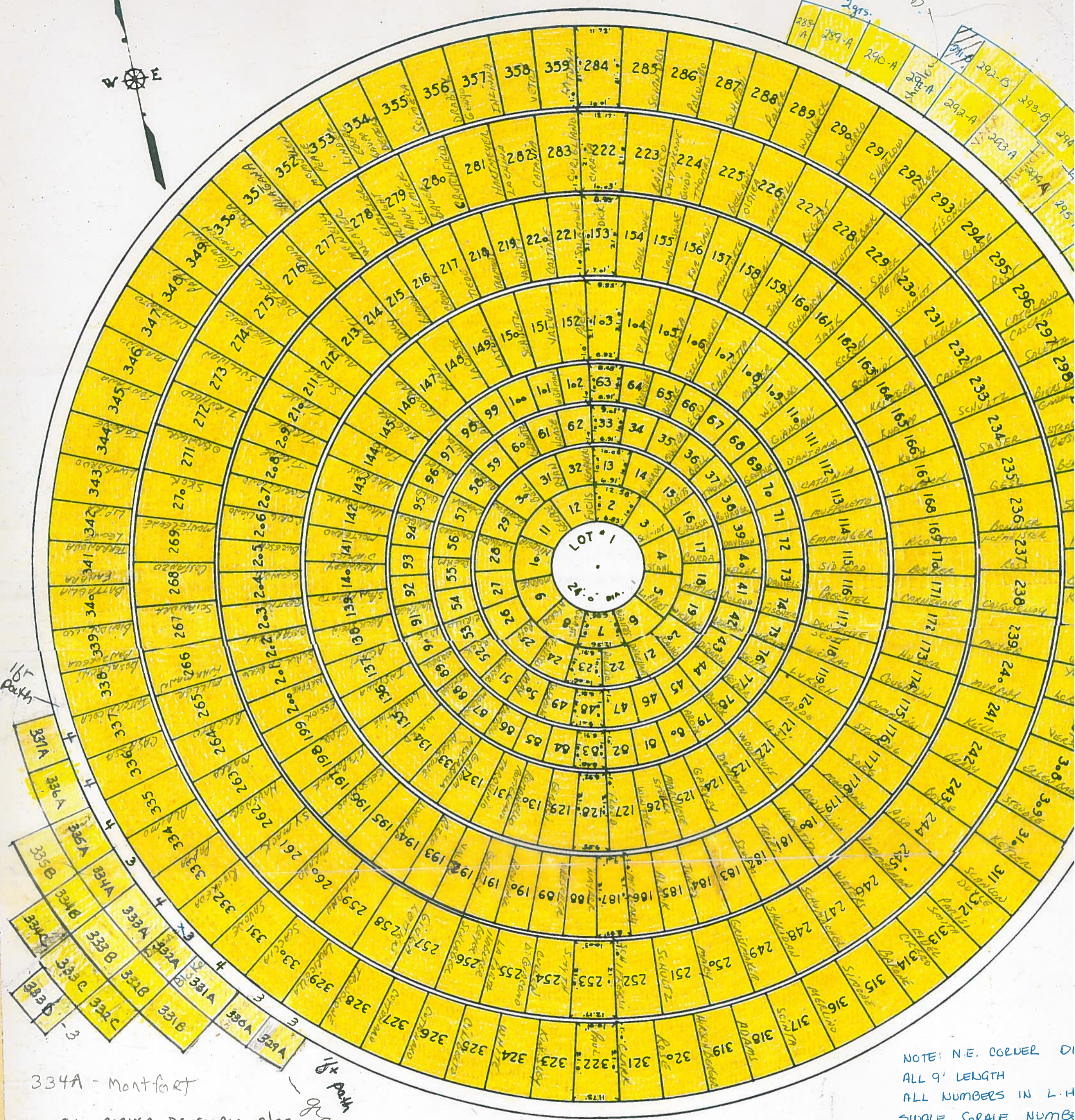


*Gravel pit
Name up Mt
Macedon
on future
approach to
road*



334A - Montfort

NOTE S.W. CORNER DEVELOPED 9/85
ALL 9' LENGTH
ALL NUMBERS IN CENTER OF LOT

329 A.	3gr.	334 A.	3gr.
330 A.	3gr.	334 B.	3gr.
331 A.	4gr.	334 C.	3gr.
331 B.	4gr.	335 A.	4gr.
332 A.	3gr.	335 B.	4gr.
332 B.	3gr.	336 A.	4gr.
332 C.	3gr.	337 A.	4gr.
333 A.	4gr.		
333 B.	4gr.		
333 C.	4gr.		
333 D.	3gr.		

63 gr. TOTAL

*1/4 path
Gravel pit as Mt Macedon m
also map.*

NOTE: N.E. CORNER DI
ALL 9' LENGTH
ALL NUMBERS IN L.H
SINGLE GRAVE NUMBER
TOP ROW 2gr #2
290-A = 13'-7" 292-B = 1
291-A = 13'-8" 293-B = 1
292-A = 13'-7" 294-B = 1
293-A = 13'-7" 295-B = 1
294-A = 13'-7" 296-B = 1
295-A = 13'-2"
296-A = 13'-2"
1 CENTER PLOT - 452.39
11 TWO GRAVE LOTS • 97.10
20 TWO GRAVE LOTS • 84.02
30 TWO GRAVE LOTS • 79.05
40 TWO GRAVE LOTS • 76.9
50 FOUR GRAVE LOTS • 172.0
69 FOUR GRAVE LOTS • 167.3
62 SIX GRAVE LOTS • 233.
76 SIX GRAVE LOTS • 228.

Mount Calvary Section D